

A row of white industrial air conditioning units, likely for trucks or trailers, is shown from a low angle. The units are arranged in a line, receding into the background. They have a white, boxy design with multiple vents and a control panel on the side. The floor is a green, grid-patterned surface, possibly a loading dock or a specialized floor for these units. The lighting is bright, highlighting the white color of the units.

HIGH convenience for
high-demand

ETAPDOĞAN



We are the leader in
large-volume container
production in Türkiye



As Etap Dođan, established in 2015 with the joint investment of Özgörkey Holding and Dođan Plastik, we carry out our production activities in İzmir-Pınarbaşı, in the same facility with Etap Enjeksiyon Plastik San. ve Tic. A.Ş., a subsidiary of Özgörkey Holding.



Our top priority is to meet the needs of our stakeholders in the best way possible, with our commitment to high quality and 100% customer satisfaction.

By focusing on the principles of the circular economy, we continuously review all our processes, improve ourselves, and carry out our activities with the principle of high responsibility and transparency, adding value to our stakeholders in sustainability initiatives. While we aim to be a pioneer in our sector in the field of sustainability, we are also the leader in Türkiye in the production of oversized containers with our specialty products.

- 22.000 m² area in total
- 9.000 m² indoor area
- 6,000 tons/year production volume
- 60 kg, the largest injection molding machine capacity in Türkiye
- The largest box production in Türkiye, measuring 100x120x85 cm (h)
- 100% of the energy used is from IREC renewable energy
- Signatory to the United Nations Global Compact (UNGC)

We are the leader in large-volume container production in Türkiye.





OUR MISSION

To position ourselves as the sustainable strategic solution partner for our stakeholders while we care for a nature friendly, humanitarian approach in building the future on better conditions.



OUR VISION

To be a company known for its innovative and sustainable packaging solutions, creating continuous synergy with its employees and stakeholders as the perfect solution partner from the circular economy perspective.

OUR VALUES



The values of an establishment bear the signature of its founder.

Hence, our values have reached our day with the principles and values of Ahmet Nevzat Özgörkey establishing “Care” in the essence of our core values that we all align with.



Team Özgörkey is our guarantee for keeping our values alive!

CARE FOR OUR BUSINESS

We work with care to create perfect customer satisfaction with our entire knowledge, skills, experience, talents, and competencies.

CARE FOR OUR WORLD

We carry out our practises and operations considering their impact on nature and make a planning of the steps ahead to reduce our carbon footprint.

CARE FOR OUR PEOPLE

We are a strong team who has common priorities, sharing rights and responsibilities in common with a high ability to move together.

CARE FOR THE FUTURE

We take initiative to provide solutions and work hard to leave a better world to future generations.





SUSTAIN- ABILITY

We know that recycling is a shared obligation for consumers, producers, and ourselves.

We are developing alternatives for plastic crates that have reached the end of their lifecycle to stay in the value chain and become part of the circular economy through our sustainability efforts.

In addition to raising awareness, we are evolving ourselves and our product options to ensure that our products are recyclable, reusable, and made of recycled raw materials.

COOPERATION & MEMBERSHIPS

Working in close cooperation with our local and global business partners, we develop, improve, and create joint projects together for a sustainable future.

At Etap Doğan, we emphasize participation in industry-related platforms as well as various platforms in different fields such as environment, economy, and gender equality.

- UNGC Signatories Association
- Aegean Regional Chamber of Industry and Commerce
- Izmir Chamber of Commerce
- Aegean Exporters Association
- TMMOB Chamber of Chemical Engineers



OUR QUALITY POLICY

As Etap Doğan, our priority is to understand the requirements, expectations, and needs of all our customers at the maximum level and to transform the plastic we shape with our know-how and creative approaches into quality and sustainable products.



Our Quality Management System has been established in accordance with ISO 9001:2015 Quality Management System standards and all applicable legal and other requirements. Our system also covers the creation, development, and maintenance of quality, environment, occupational health, and safety awareness in all our employees. Our in-house activities are based on efforts to measure, prevent, and continuously improve. Process targets created in this direction are periodically evaluated and continuously improved.

OUR OBJECTIVES



- To work with the awareness of “care” at every level and in every work we do,
- To work with the principle of zero accident and zero occupational disease in occupational health and safety,
- To effectively manage risks and opportunities in all our processes with the principle of continuous improvement,
- To ensure compliance with the rules of ethics and to spread the culture of ethics throughout our organization,
- Adopting the corporate culture through active participation of employees and providing an open communication environment
- To comply with the requirements of national and international legislation on quality, environment, occupational health and safety,
- To increase and continuously improve the level of quality awareness and consciousness by ensuring continuity in customer satisfaction and quality,
- To minimize environmental risks and occupational health and safety hazards and risks,
- To ensure information security in all activities in our processes,
- To contribute to a sustainable future by minimizing the damage we will cause to the environment and to reduce our carbon footprint,
- To be in collaboration with all our stakeholders.

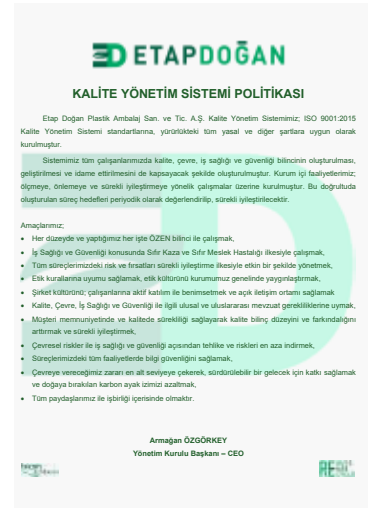
CERTIFI-CATES



Provincial Directorate
of Food, Agriculture
& Livestock Business
Registration Certificate



ISO 9001:2015 Quality
Management System
Certificate



Quality Management
System Policy



“

**With our durable,
high-quality,
recyclable, and
reusable
large-volume crates,
we safely protect,
store and transport
your products.**

”





Our injection-molded large-volume containers are chosen by many national and international brands that operate in the food, agriculture, retail, automotive, industrial, and logistics sectors.

We prioritize high customer satisfaction and being a sustainable strategic solution partner for our stakeholders.

PRODUCTS



ED-KON 121058 P

Perforated / 4 Feet

External Dimensions	1000x1200x580 (h) mm
Internal Dimensions	920x1120x430 (h) mm
Weight (kg) (4 Feet)	28.00 ±%3
Volume (lt)	450 lt

TRANSPORT

Dynamic Capacity (kg)	Static Capacity (kg)	Truck (2,95 m)	20 FT	40 FT HQ	40 FT PW HQ	45 FT PW HQ
700 kg	4000 kg	156	40	110	120	134

121058 Container Capacity (kg)

Apple	220	Watermelon	220
Pear	260	Potatoe	300
Peach	260	Tomatoe	300
Orange	260	Onion	260
Kiwi	260	Carrot	280
Olive	290		

ED-KON 121058 C

Closed / 4 Feet

External Dimensions	1000X1200X580 (h) mm
Internal Dimensions	920x1120x430 (h) mm
Weight (kg) (4 Feet)	29.50 ±%3
Volume (lt)	450 lt



TRANSPORT

Dynamic Capacity (kg)	Static Capacity (kg)	Truck (2,95 m)	20 FT	40 FT HQ	40 FT PW HQ	45 FT PW HQ
700 kg	4000 kg	156	40	110	120	134



ED-KON 121076 P

Perforated / 4 Feet

External Dimensions	1000x1200x760 (h) mm
Internal Dimensions	920x1120x610 (h) mm
Weight (kg) (4 Feet)	34.00 ±%3
Volume (lt)	625 lt

TRANSPORT

Dynamic Capacity (kg)	Static Capacity (kg)	Truck (2,95 m)	20 FT	40 FT HQ	40 FT PW HQ	45 FT PW HQ
700 kg	4000 kg	156	40	106	112	122

121076 Container Capacity (kg)

Apple	300	Watermelon	310
Pear	350	Potatoe	420
Peach	350	Tomatoe	420
Orange	350	Onion	350
Kiwi	350	Carrot	390
Olive	400		

ED-KON 121076 C

Closed / 4 Feet

External Dimensions	1000x1200x760 (h) mm
Internal Dimensions	920x1120x610 (h) mm
Weight (kg) (4 Feet)	36.00 ±%3
Volume (lt)	625 lt



TRANSPORT

Dynamic Capacity (kg)	Static Capacity (kg)	Truck (2,95 m)	20 FT	40 FT HQ	40 FT PW HQ	45 FT PW HQ
700 kg	4000 kg	156	40	106	112	122



ED-KON 121085 P

Perforated / 4 Feet

External Dimensions 1000x1200x850 (h) mm

Internal Dimensions 920x1120x850 (h) mm

Weight (kg) (4 Feet) 36.00 ±%3

Volume (lt) 720 lt

TRANSPORT

Dynamic Capacity (kg)	Static Capacity (kg)	Truck (2,95 m)	20 FT	40 FT HQ	40 FT PW HQ	45 FT PW HQ
700 kg	4000 kg	104	30	88	96	104

121085 Container Capacity (kg)

Apple	350	Watermelon	360
Pear	400	Potatoe	490
Peach	400	Tomatoe	490
Orange	400	Onion	400
Kiwi	400	Carrot	460
Olive	470		

ED-KON 121085 C

Closed / 4 Feet

External Dimensions 1000x1200x850 (h) mm

Internal Dimensions 920x1120x850 (h) mm

Weight (kg) (4 Feet) 38.00 ±%3

Volume (lt) 720 lt



TRANSPORT

Dynamic Capacity (kg)	Static Capacity (kg)	Truck (2,95 m)	20 FT	40 FT HQ	40 FT PW HQ	45 FT PW HQ
700 kg	4000 kg	104	30	88	96	104



ED-KON 111158 P

Perforated Base / Perforated Walls

External Dimensions 1130x1130x580 (h) mm
 Internal Dimensions 1050x1050x430 (h) mm
 Weight (kg) (4 Feet) 27.00 ±%3
 Volume (lt) 510 lt

TRANSPORT

Dynamic Capacity (kg)	Static Capacity (kg)	Truck (2,95 m)	20 FT	40 FT HQ	40 FT PW HQ	45 FT PW HQ
700 kg	4000 kg	120	40	104	110	120

ED-KON 5500 C

Closed / 4 Feet

External Dimensions 800x1200x790 (h) mm
 Internal Dimensions 740x1135x650 (h) mm
 Weight (kg) (4 Feet) 22.00 ±%3
 Volume (lt) 300 lt



TRANSPORT

Dynamic Capacity (kg)	Static Capacity (kg)	Truck (2,95 m)	20 FT	40 FT HQ	40 FT PW HQ	45 FT PW HQ
300 kg	2000 kg	132	36	75	90	99



ED-KON 2700 P

Perforated / 4 Feet

External Dimensions	640x1000x670 (h) mm
Internal Dimensions	590x930x515 (h) mm
Weight (kg) (4 Feet)	11.50 ±%3
Volume (lt)	270 lt

TRANSPORT

Dynamic Capacity (kg)	Static Capacity (kg)	Truck (2,95 m)	20 FT	40 FT HQ	40 FT PW HQ	45 FT PW HQ
300 kg	1800 kg	188	60	126	126	141

ED-KON 2700 C

Closed / 4 Feet

External Dimensions	640x1000x670 (h) mm
Internal Dimensions	590x930x515 (h) mm
Weight (kg) (4 Feet)	12.00 ±%3
Volume (lt)	270 lt



TRANSPORT

Dynamic Capacity (kg)	Static Capacity (kg)	Truck (2,95 m)	20 FT	40 FT HQ	40 FT PW HQ	45 FT PW HQ
300 kg	1800 kg	188	60	126	126	141



ED-KON 2000 P

Perforated / 4 Feet

External Dimensions	640x1000x550 (h) mm
Internal Dimensions	590x930x395 (h) mm
Weight (kg) (4 Feet)	9.50 ±%3
Volume (lt)	200 lt

TRANSPORT

Dynamic Capacity (kg)	Static Capacity (kg)	Truck (2,95 m)	20 FT	40 FT HQ	40 FT PW HQ	45 FT PW HQ
300 kg	1800 kg	235	80	168	168	188

ED-KON 2000 C

Closed / 4 Feet

External Dimensions	640x1000x550 (h) mm
Internal Dimensions	590x930x395 (h) mm
Weight (kg) (4 Feet)	10.00 ±%3
Volume (lt)	200 lt



TRANSPORT

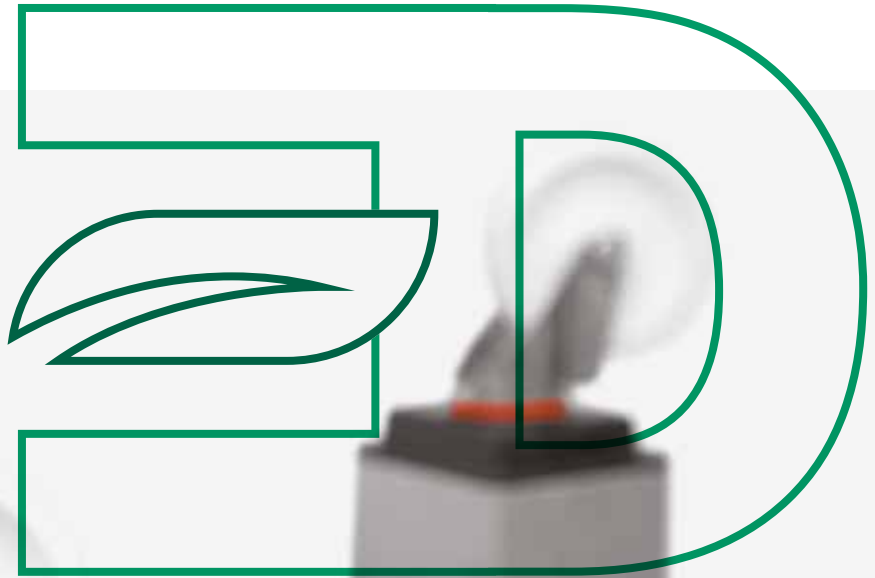
Dynamic Capacity (kg)	Static Capacity (kg)	Truck (2,95 m)	20 FT	40 FT HQ	40 FT PW HQ	45 FT PW HQ
300 kg	1800 kg	235	80	168	168	188

“

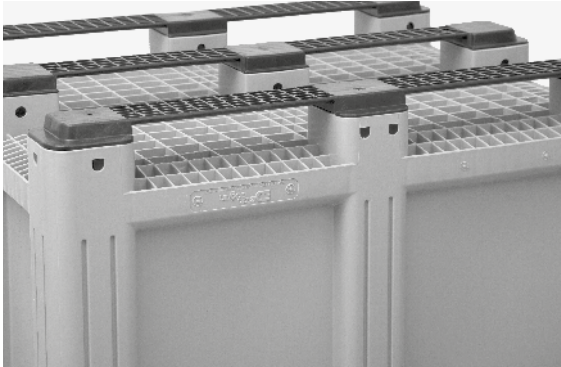
**We continuously
review all of our
processes with circular
economy principles,
operate with a high
level of responsibility
and transparency,
and create value for
our stakeholders in
sustainability initiatives.**

”





ACCESSORIES



Runner



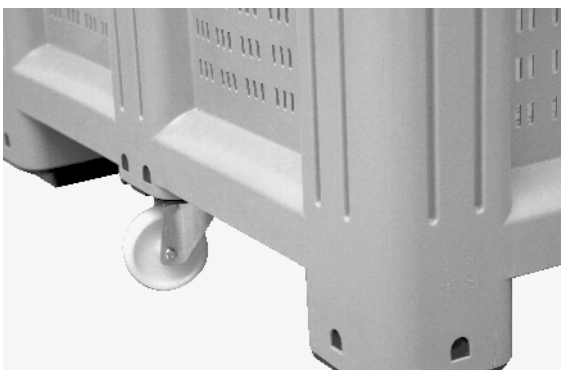
Lock



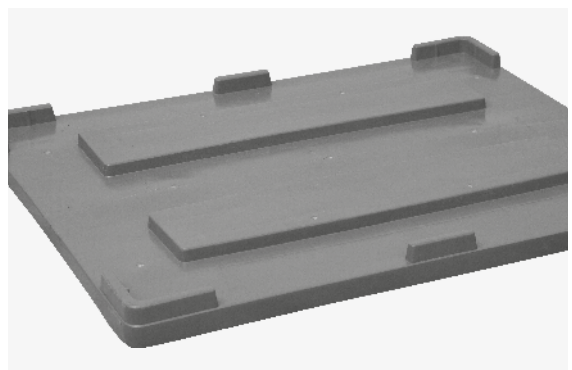
Hinge



Corner Wheels



Middle Wheels



Lid



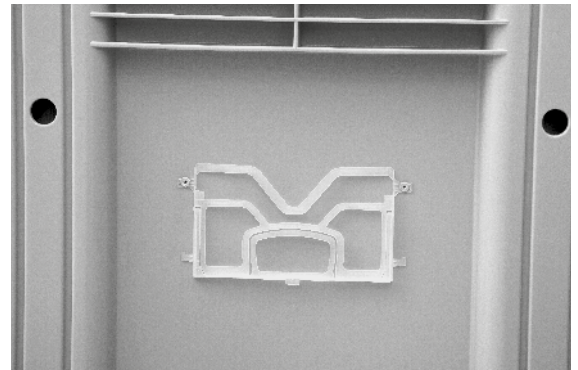
Drainage Valve



Screen Printing Logo



Embossed Print Logo



Tag Holder



Feet

Weight

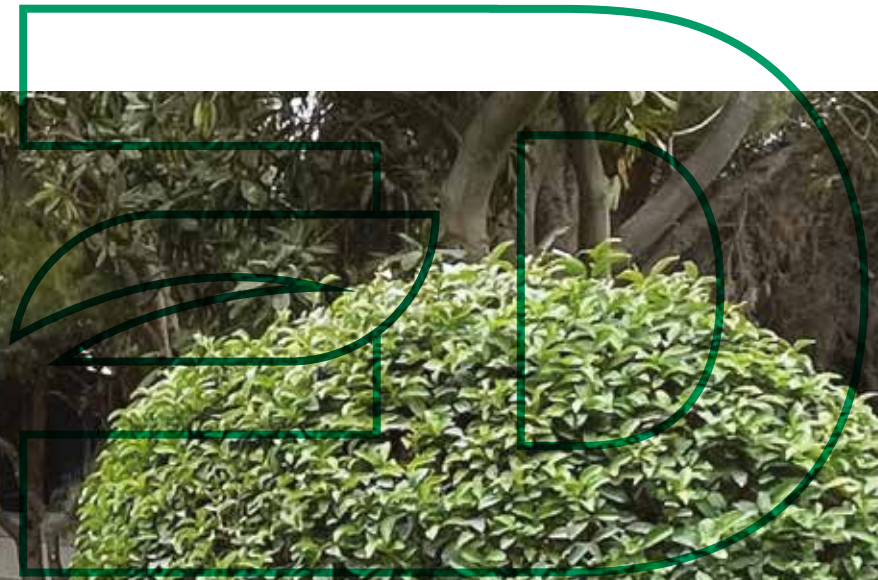
5 Feet	+ 0.8 Kg
6 Feet	+ 1.8 Kg
8 Feet	+ 3.2 Kg
9 Feet	+ 4.0 Kg
2 Runners	+ 3.0 Kg
3 Runners	+ 5.5 Kg

“

**We are
committed
to helping build
a greener future
and empowering
our stakeholders
to make
sustainable
choices.**

”





SUSTAIN-
ABLE
PRODUCTS

We recognize that recycling is a shared responsibility for consumers, producers, and, undeniably, for us.

We are developing alternatives for big plastic container that have reached the end of their useful life so that they can remain in the value chain and become part of the circular economy through our sustainability efforts.

In addition to raising awareness, we are evolving ourselves and our product options to ensure that our products are recyclable, reusable and produced from recycled raw materials.

Aligned with our corporate goal to become a leading strategic stakeholder in sustainability;

- recyclable plastics,
- bioplastics,
- circular economy models that can be adapted to the supply chain are the areas we focus on.





etapdogan.com.tr